

HAIR BEFORE

AFTER *MANIC PANIC*

Creamtones

DREAMSICLE™

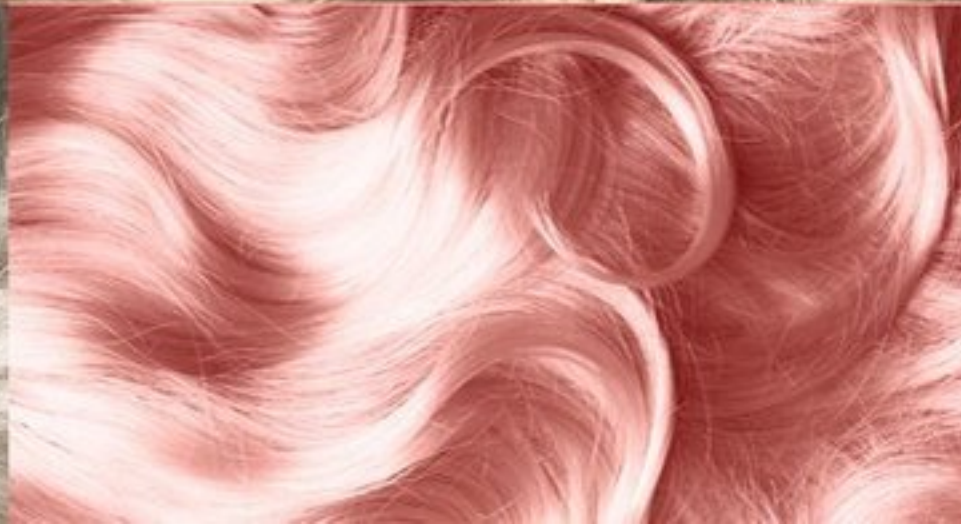
Level 8
Light
Blonde



Level 9
Very Light
Blonde



Level 10
Lightest
Blonde



Creamtone colors are very lightly pigmented dyes and require level 10 hair or lighter for best results.

HAIR BEFORE

AFTER *MANIC PANIC*

Creamtones[™]

VELVET VIOLET[™]

Level 8
Light
Blonde



Level 9
Very Light
Blonde



Level 10
Lightest
Blonde



Creamtone colors are very lightly pigmented dyes and require level 10 hair or lighter for best results.

HAIR BEFORE

AFTER *MANIC PANIC*

Creamtones[™]

BLUE ANGEL[™]

Level 8
Light
Blonde



Level 9
Very Light
Blonde



Level 10
Lightest
Blonde



Creamtone colors are very lightly pigmented dyes and require level 10 hair or lighter for best results.

HAIR BEFORE

AFTER *MANIC PANIC*

Creamtones

SEA NYMPH™

Level 8
Light
Blonde



Level 9
Very Light
Blonde



Level 10
Lightest
Blonde



Creamtone colors are very lightly pigmented dyes and require level 10 hair or lighter for best results.