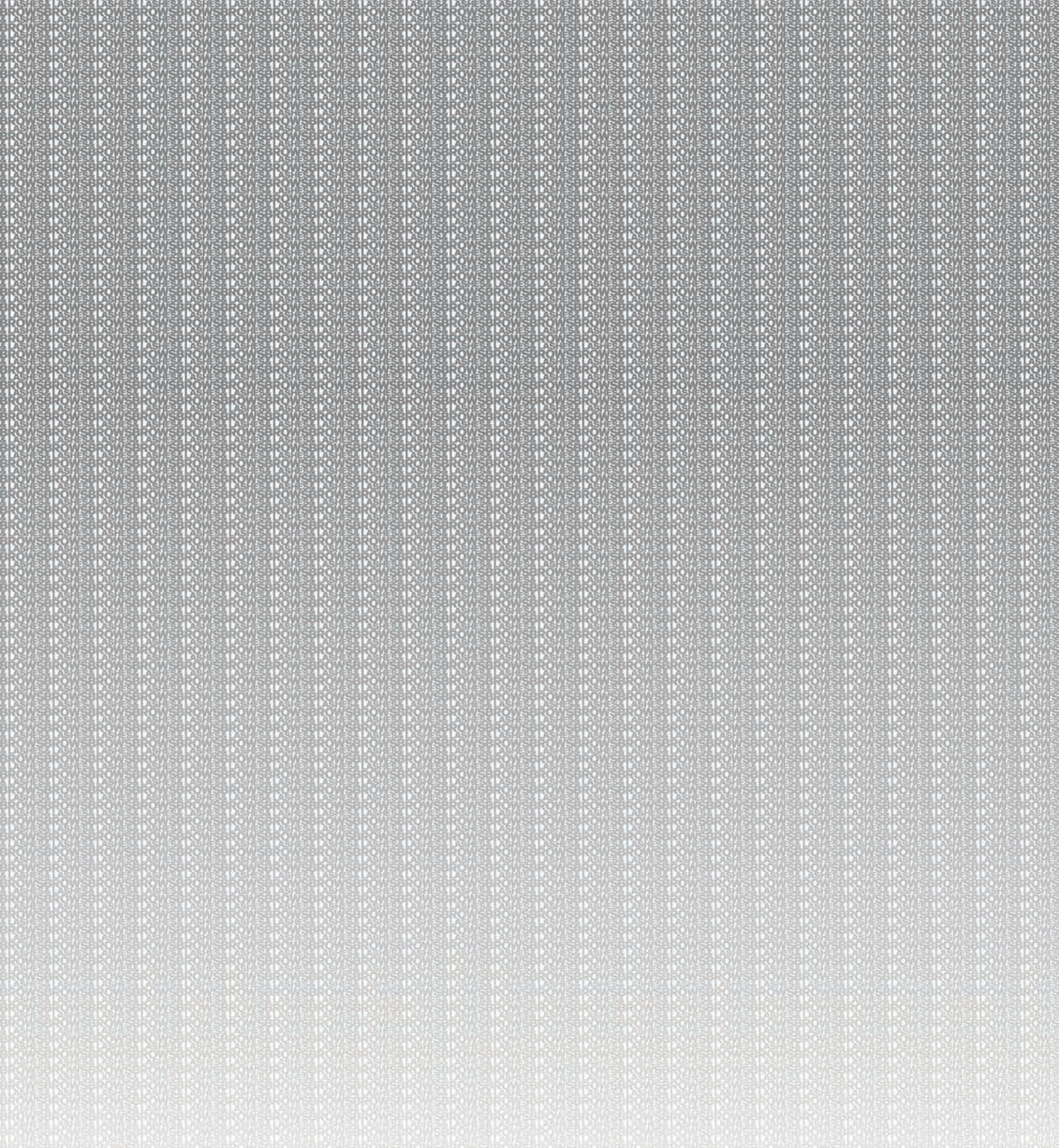


BROWS & LASHES





It's time for performance cosmetics that really work. Enhance your features for real lashes & brows with a safe & effective formula. Backed by clinical studies, Grande Cosmetics has real results for real people. An award-winning product range with never-seen-before results. Achieved a 5-star rating with cosmetics giant Sephora in the respective categories.

GrandeLASH-MD Lash Enhancing Serum

- Created with blend of vitamins, antioxidants & amino acids for guaranteed longer & thicker-looking lashes, especially for short, thinning, brittle & damaged lashes.
- Safe, easy, effective, vegan, cruelty-free, lash extension safe.
- See results in as little as 4 weeks & full results in 3 months.
- Apply like a liquid eyeliner on upper lashes at night.

0.7ml (±4 week supply) **18688**
2.0ml (±3 month supply) **14194**



GrandeBROW-FILL, 4g

- Made in Italy.
- Tinted brush-on brow gel infused with fibers & peptides that dries instantly to allow for multiple layers.
- Adheres to most fine brow hairs, leaving them fuller & more defined after single use.
- Long-wear formula evenly coats brows with natural tint & fills sparse areas with a natural finish.
- Allows for sculpting & defining arches for a bold brow look lasting all day.
- Coat applicator, wipe off excess, brush onto eyebrows in upward strokes to shape & build.

Light **14195**
Dark **14196**



GrandeMASCARA, 6g

- Condition while you coat.
- Rich-black, Italian mascara for extreme volume while nurturing & conditioning lashes with peptide-infused & natural wax formula.
- Use to achieve an instant false-lash look that looks healthier & longer over time.
- Build-able, water-resistant formula keeps lashes flexible & strong & is easy to remove.
- Sweep from lash base to tip, applying multiple coats for volume.

14200



GrandeMASCARA Waterproof, 4.2g

- Everything you love about the lash-loving GrandeMASCARA now in waterproof form!
- Provides locked-on volume & length through every laugh, splash & tear.
- Rich-black, buildable, creamy formula that layers lashes to new lengths without flaking or smudging.
- Features lash care ingredients like Myristoyl Pentapeptide-17 & Vitamin E to condition while you coat for healthier-looking lashes over time.
- Easily removable to prevent breakage while keeping the lashes flexible & strong.
- Peptide infused formula for healthier looking lashes.
- Waterproof, buildable, clump-free, long-lasting formula.
- Locks on lashes for all-day wear. Easily removable with make-up remover.
- Made in Italy & cruelty-free.

18221



GrandeBROW Brow Enhancing Serum

- Award-winning brow enhancing serum infused with vitamins, antioxidants & amino acids for fuller, bolder-looking brows in 6-8 weeks, with full improvement in 4 months.
- Perfect for sparse, misshapen, thinning, over-plucked, or tail-less brows. Conditions each strand so brows look strong & healthy.
- Unique soft-tip brush designed to deliver product to thinning, sparse, misshapen & over-plucked brows.
- Apply to natural shape brow area at night.

1.0ml (±6 week supply) **18689**
1.5ml (±8 week supply) **16737**



GrandeBROW 2-in-1 Tinted Brow Gel + Brow Enhancing Serum, 3.5ml

- Reap all the benefits of GrandeBROW Brow Enhancing Serum while instantly filling in sparse areas.
- Buildable coverage packed with brow enhancing serum to promote the appearance of naturally fuller, bolder-looking brows instantly & over time.
- Powered by the same active ingredients as GrandeBROW.
- Provides alternative to microblading & other brow services.



Light **18680**

Medium **18681**

Dark **18682**

GrandeDRAMA Intense Thickening Mascara with Castor Oil, 9g

Intense thickening mascara infused with omega fatty acid-rich castor oil to promote lush, dense lashes with unbeatable shine & glossiness. A buildable, no-flake formula that instantly lifts, lengthens & adds volume.

Key Benefits:

- Formulated with castor oil, highly concentrated in omega-6 fatty acids to help thicken & nourish lashes.
- Hourglass wand individually thickens & separates each lash.
- Unrivaled lash thickness & intensity, while nourishing thin or sparse lashes.
- Rich matte black finish.

9g **16736**



GrandeREPAIR Leave-In Lash Conditioner, 2.89g

Did you know you naturally lose 1-2 lashes daily? Give lashes the extra care they need with this lash-saving conditioning mask. An invisible leave-in conditioner that protects, strengthens, fortifies & softens lashes, with a strong foundation. Infused with Widelash™, a biotin peptide that protects against lash fallout, breakage, splitting & environmental toxins.

Key Benefits:

- Stronger, softer, more fortified & healthier lashes
- Less lash fallout, brittleness & breakage
- Protect against the environment, frequent mascara application, harsh eye make-up removers & eyelash curler damage
- Ideal for post-extension lash care
- Helps mascara apply more easily

16735



GrandeGLIDE Brow Definer, 0.25g

- Creamy, retractable brow pencil to define & shape brows in one easy step.
- Buttery formula effortlessly glides on & blends out for the most natural look.
- Twist until tip of pencil shows, apply along brow with light pressure in upward motion & brush through with built-in blender.

Light **14197**
Dark **14199**



GrandePRIMER Pre-Mascara Lengthener & Thickener, 9.5g

- A white pre-mascara that helps thicken & lengthen lashes.
- It preps your lashes for any further mascara application & boosts their effectiveness.
- Apply generously to eyelashes in upward motion like mascara from base to tips.

14432



GrandeFANATIC Fanning & Curling Mascara Infused with Widelash™, 10.5g

Get pushed up, fanned out, & gorgeously long, curled lashes without any smudging, clumping or flaking. Infused with peptides that helps anchor the 1-2 lashes naturally lost per day for the look of healthier, stronger, & fuller looking lashes over time even after mascara has been taken off. Full benefits are experienced after 28 days of consistent use.

- Curis, lifts & lengthens lashes
- Unique molded brush separates & defines lashes, allowing it to reach every lash without smudging, clumping, or flaking.
- Swipe from lash base to tip using inner brush curve. Wiggle upwards & outwards to grab & lift every last lash.
- Separate & define - coat bottom lashes using outer brush curve. Gently separates & defines every lash.
- Fan it out - use brush tip to apply extra coat to outermost lashes for an even greater fan effect. Pull up & out towards outer corner of eye.

18246



GrandeLINER Liquid Eyeliner with Lash Enhancing Serum

A special, ultra-black liquid eyeliner infused with signature lash enhancing serum. Treat your lashes to an instant boost. This 2-in-1 eyeliner defines & sculpts lashes, all while enhancing their length, thickness & growth. 1.5ml

18353



Mini Lash Envy AM & PM Set

Enhance, boost, amplify & strengthen lashes day & night. The AM & PM set is for those who demand the best lashes all day, every day. Includes two lash products for a foolproof lash enhancement regimen. Each comes in a mini size, making them ideal for any traveling cosmetics bag.

Includes:

- 1 x Mini GrandeLASH-MD Lash Enhancing Serum, 0.7ml (4 week trial size)
- 1 x Mini Black GrandeLINER Liquid Eyeliner with Lash Enhancing Serum, 0.7ml

18544



Lip Plumping Duo Ornament

Includes:

- 1 x GrandeLIPS Clear Gloss (full size) - 2.4ml
- 1 x GrandeLIPS Smoked Cherry (travel size)

15003



Bling Eyelash Curler

Adorned with pink diamonds on handle. Quality design made of stainless steel to emphasize & curl lashes. An ideal companion tool for other Grande Cosmetics products.

14685



GrandeLASH-LIFT Heated Lash Curler

Stop the lash lull with GrandeLASH-LIFT. A do-it-yourself, rechargeable, heated lash lift that applies just the right amount of gentle heat to revitalize & lift lashes. Unlike traditional lash curlers that can lead to breakage, GrandeLASH-LIFT curls lashes without crimping or pinching. Easy to use & its sleek, compact, portable design is perfect for on-the-go touch-ups.

Key Benefits:

- Grooved safety slot design to protect skin & prevent heat from direct contact with eyelid.
- Produces a long-lasting curl for up to 8 hours.
- Curved comb design ensures no lash is left behind.
- Equipped with USB cable for quick recharging.
- Temperature sensitive wire: low & high temperature curl settings to best suit individual lashes.

17099



1, 2, 3, ... We have LashLift! Introducing the ultimate boost for natural lashes, the HIVE® LashLift system. **Only for use by trained technicians.**

Take the beauty & volume of lashes into another stratosphere & create the effect of longer, lifted lashes. The LashLift system comprises of 3 liquid treatments: Lifting Crème (1), Treatment Lotion (2) & Conditioning Serum (3). When combined with HIVE® Lash Lifting Shields (A) & Bonding Serum (B), it creates everything required for a first class professional lash lift treatment.

An easy-to-follow 3 step journey to eyelashes that are out of this world! **1 - Lift, 2 - Treat, 3 - Condition**

Step 1: HIVE® Lash Lifting Crème

Applied to the base of the lashes, this highly effective crème, enhanced with Hydrolyzed Silk & Vitamin B3, weakens the disulfide bonds in each hair, allowing them to be re-shaped & lifted around the contour of the shield. This creates maximum lift.

10 x 1.5ml sachets
14971

Step 2: HIVE® Lash Treatment Lotion

Maintain, fix & hold the perfectly positioned & re-shaped lashes with the Lash Treatment Lotion (2). The smooth, silky lotion is applied to the same area as the Lash Lifting Crème (1), restoring the disulfide bonds in the expertly-crafted new shape.

10 x 1.5ml sachets
14972

Step 3: HIVE® Lash Conditioning Serum

A fast-acting serum that moisturizes & conditions the eyelashes to maintain the results for up to 6-8 weeks. Aloe Vera promotes smoothness & a healthy shine in the hair. The dual-functioning Conditioning Serum (3) gently, but effectively, removes any tint or bonding serum residue for a fantastic finish.

10 x 1.5ml sachets
14973



Lifting Shields

Designed for use with the HIVE® LashLift system & available in 3 sizes, these silicone-based shields provide a unique contour to aid the re-shaping of natural lashes. The width of the Lifting Shields can be trimmed in length, enabling an absolutely perfect fit on the lash lid.

10 pieces
14974

Medium
14975

Large
14976



LashLift Tool
14978



HIVE® LashLift Starter Kit

Contains:

- 10 x Lifting Crème, 1.5ml
- 10 x Treatment Lotion, 1.5ml
- 10 x Conditioning Serum, 1.5ml
- 10 x Lifting Shields - Small
- 10 x Lifting Shields - Medium
- 10 x Lifting Shields - Large
- 1 x Bonding Serum, 5ml
- 10 x glue rings

14979



BROW WAXING KITS

HIVE® Brow Waxing Kit

Provides salon & brow bar owners the perfect opportunity to increase their customer offering. This compact & complete all-in-one business solution is essential for every brow station or treatment room. Made in the UK.

Includes:

- 1 x Petite Compact 200cc Wax Heater
- 2 x 50g Sensitive Hot Film Wax Discs
- 1 x Pre Wax Cleansing Lotion, 200ml
- 1 x After Wax Treatment Lotion, 200ml
- 50 x mini disposable wooden spatulas
- 1 x pair of angled tweezers

12507



Original Eyelash & Eyebrow Tint

Created for the salon professional, Apraise Eyelash & Eyebrow Tinting System fuses color pigment technology & beeswax with a rich cream base to penetrate deep into the hair shaft to provide radiant color from root to tip. Water-resistant, smudge-proof & lasts up to eight weeks. 20ml



Black
10560



Grey
10561



Blue Black
10562



Dark Brown
10563



Light Brown
10564

Tint Developer

Enhances the color of eyelash tint being used. 50ml
10555



Protective Eye Sheets

Premium protective sheets for use during the tinting procedure, to prevent skin from staining. 96 Sheets
10558



Stain Remover

Removes any stains or splashes that may occur when performing the tinting procedure. 100ml
10556



Cream Developer

Stabilized cream-based developer. Sufficient for approximately 300 applications. 100ml
10559



Eyebrow Shaping Wax

Includes shaping wand. 50ml
12340



Vegan & PPD Free Eyelash & Eyebrow Tint

Created for the salon professional, the new & improved Apraise lash & brow tint is 100% vegan & PPD free. Offers higher shine, better coverage & stronger staining power. The water-resistant, smudge-proof formula lasts up to 8 weeks & visibly transforms the appearance of lashes & brows, achieving the perfect shade every time. 20ml



Black #1
19079

Graphite #11
19365

Blue/Black #2
19366

Dark Brown #3
19080

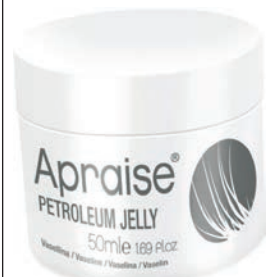
Light Brown #31
19081

Chestnut #4
19071



Petroleum Jelly

Essential stain protection of the skin around the eyelash or eyebrow when tinting. 50ml
10557



Starter Kit

Contains:
- Eyelash tint: 1x black, 1x blue black, 1x dark brown
- Eyelash tint protective sheets, tint developer, dappen dish & tint brush
10565



Salon Starter Kit

Contains:
Eyelash tint: 1x black, 1x blue black, 1x dark brown, 1x light brown, 1x graphite, 1x stain remover, 1x petroleum jelly, eyelash tint protective sheets, tint developer, dappen dish & tint brush
10566



Dual Ended Angled Tinting Brush
With vegan fibers.
19370



Dappen Multi-Purpose Glass Mixing Dish
19369



Brow Sculpt

Get thicker, fuller looking, defined brows with this clear gel formula that is ultra-strong, flake free & non-sticky. A speedy alternative to an actual brow lamination treatment.

The precise applicator allows you to tame & create the perfect brows that will stay in place & last all day. Contains Aloe Vera & Jojoba Seed Oil for soothing, moisturising & nourishing benefits.

10ml
18788



Mapping Paste

To map the desired brow shape. Creates clean, crisp & defined brows. A smudge-proof, smooth textured paste that contains Sweet Almond Oil that spreads well over the skin. Creates a barrier for a flawless application. A must have essential for any brow tinting treatment.

20ml
18789



Nourishing Brow Oil

A luxurious treatment that will help hydrate, nourish & provide optimum brow condition & promote healthier brows.

Formulated with Sweet Almond & Rosemary Leaf Oil, which act as natural moisturizers, to help ensure long-lasting results. Reduces split ends & controls hair breakage. An aftercare essential for post tint & lamination treatments.

30ml
18790



Brow Scrub

The perfect prep & aftercare treatment to exfoliate brows. A naturally derived exfoliator that gently exfoliates the skin & eyebrows, removing dead skin cells & impurities to ensure a smooth canvas to apply tint. An essential to use before any brow lamination maintenance treatment.

50ml
18791



Foam Cleanser

The perfect prep & aftercare treatment to cleanse lashes & brows. Effectively cleanses the lash & brow area of oil, dirt & make-up, leaving the skin prepped for any lash & brow treatment.

An essential to use during any brow lamination maintenance treatment. Can be used daily to clean eyelash extensions.

100ml
18792



Miracle Growth Serum

Transforms lashes & brows in just 30 days. Stimulates keratin production, improving lash fullness & growth.

Infused with Vitamin E & Jojoba Oil. Ideal for short, brittle, thin lashes & sparse brows to support their natural growth cycle. Missing nourishment & strength are restored.

After 30 days, brows & lashes are visibly healthier, longer & fuller. A gentle, vegan, cruelty-free formula usable on all skin types.

10ml
19185



Lash & Brow Maintenance Kit

- Includes:
- 6 x Foam Cleanser, 100ml
 - 6 x Brow Sculpt, 10ml
 - 6 x Brow Scrub, 50ml
 - 6 x Growth Serum, 10ml
 - 6 x Nourishing Brow Oil, 30ml
 - 25 x postcards

18855



Power Serum For Lash & Brow Growth With Optilex Growth Technology™

Fuller, longer lashes & brows in just 15 days. Growth-stimulating technology encourages the hair follicle to speed up growth.

Improves the appearance of brittle, short, thin lashes & sparse brows. Improves hair anchorage, reducing daily lash loss.

10ml
14489



Pre Wax & Tint Cleansing Lotion

Get the most from your brow treatment! Remove oil, dirt & make-up, leaving skin around the eye & brow area prepped for a lash, brow & wax treatment.

100ml
14490



Micellar Eye Make-Up Remover

Remove make-up in one swipe. A soothing & gentle oil-free formula which thoroughly cleanses the eye area, leaving no residue.

Mild surfactant technology works to only remove dirt, debris & buildup.

500ml
16675



Cooling Aloe Vera Gel

Calms & soothes all skin types, leaving skin soft & moisturized. Perfect for after facial treatments when skin is sensitive or irritated, such as after tinting, facials, peels, waxing & lasers.

Ideal for puffiness, redness & irritations. Free of parabens & mineral oil.

500ml
16676



Eye Cream

Hydrating & brightening! Refresh the skin around the eyes with this hydrating cream. Contains White Flower Extracts & Caffeine.

30ml
19367



Eye Serum

Lift & soothe the upper eyelid! Formulated with Botanical Extracts, this eye serum helps reduce the appearance of fine lines & wrinkles.

30ml
19368



LASH & BROW TINT

Salon Specifics Sensitive Lash & Brow Tint

The perfect lash & brow tint solution for sensitive & allergy-prone skin. Dermatologically approved, hypo-allergenic formula that delivers rich color to brows, but is gentle enough to be tolerated by the skin. The skin is much less likely to look & feel irritated, helping the newly applied color look as natural as possible.
15ml



Dark Brown
18812

Light Brown
18813

Midnight Black
18814

Salon Specifics Julienne Eyelash Tint, Water-Resistant

15ml
Black **2811**
Dark Brown **2817**
Light Brown **12503**



Instant Eyebrow Tint - 3 Application Kit

Permanent eyebrow tint with 6 weeks of rich, vibrant color. Easy to apply in less than 2 minutes. A great alternative for individuals sensitive to traditional hair color. Contains no hydrogen peroxide or synthetic dyes. Formulated with plant extracts, this fast-acting, gentle formula delivers rich, long-lasting color. Covers the most resistant grey hair. Each box contains cream colorant, 3 x gel activator, applicator stick, work station cards & instruction manual.



Dark Brown
16706

Light Brown
16708

RefectoCil Tint

Imparts rich, deep color to eyebrows or eyelashes for a sophisticated look. Also works well for facial hair including beards & moustaches.

15ml
Black **2932**
Brown **2933**
Blue/Black **3724**
Graphite **18536**



BeautyPRO Cream Peroxide

10 vol For eyelash tint.
50ml
7374



BeautyPRO

BeautyPRO Fibre & Gel Mascara Set

Build your own lashes with mascara & fiber to have amazingly-long lashes, instantly & easily. Set includes two wands, mascara & fiber, for complete lash care & maintenance.
12505



BeautyPRO

BeautyPRO Non-Woven

Eye Pads
96 per bag
7422



BeautyPRO

THREADING

Lash Threading Cotton, Organic,
40 Count, 300m
13491



Perfectly Natural Strip Lashes - Create the appearance of longer, thicker lashes for a more natural look.



#53
11025



#62
11027



#45
11028



#109
11029



#110
11030



#102
11031



#202
11032

Perfectly Glamorous Strip Lashes - Add a hint of drama for the perfect go-to glamour look.



#28
11036



#13
11038



#101
11040



#81
11041



#117
11042

Perfect Strip Eyelash Adhesive, Clear
7ml
11053



Perfectly Diva - Embellished with jewels & glitter to sparkle for any special occasion.



#Romantic
11047



#Flirty
11048



#Sophisticated
11049

Starter Kits - Natural Strip Lashes
Ideal for first-time users, includes lashes, applicator & adhesive.

#53
11033



Starter Kits - Glamorous Strip Lashes
Ideal for first-time users, includes lashes, applicator & adhesive.

#33
11043



#105
11044



Pro Lash Applicator
11056



Lash DNA

Discover the best lashes for each individual eye shape. Designed to work with unique eye shapes to provide the most flattering lash fit. Three styles made to hug & highlight the eyes for a custom fit. Accentuate each eye shape for downturned & prominent eye shapes. **Each pack contains one pair of lashes.**



680 - Downturned & Prominent Eyes
16409

681 - Almond & Hooded Eyes
16410

682 - Monolid & Deep Set Eyes
16422

Pre-Permed Push Up Lashes

Just like a lash perm without the need for a lash lift. Provides a natural-looking curl without the need for tools, curlers or chemicals. Choose from loose to tight curl styles for a lift to suit any client. Lashes look natural thanks to the comfortable flex-fit band. **Each pack contains two pair of lashes.**



670 - Loose Curl - Relaxed Lift
16423

671 - Medium Curl - Natural Lift
16424

672 - Tight Curl - Dramatic Lift
16425

Perfect Brow Pomade

Creamy, long-wearing brow color that defines, sculpts & fills in eyebrows for that coveted full look. It is a multi-tasking superstar that combines the work of a pencil, powder & wax in one easy-to-use product. 3.2g



Light Brown
11450

Blonde
11596

Dark Brown
11597

Perfect Brow Powder & Stencil Combo

Lightweight, medium coverage brow powder & stencil kit used for defining, shaping & filling in eyebrows.

Two shades & 4 stencils to give you a petite, soft & full or natural eyebrow arch.
11598



Perfect Brow Defining Kit

Travel-friendly brow kit that includes all the essentials to perfectly sculpt & define brows on-the-go, with a convenient mirrored brow palette, complete with three brow powders & a brow bone highlighter.

Smudge-free & blends freely with the dual-end brush & wax grooming pencil with built-in sharpener.
11599



DIANE EYELASHES

diane

CALA EYELASHES

CALA®

Created using the finest synthetic materials with hand-feathered tips to look just like real lashes. Vegan & cruelty-free using no animal or human hair. 50-80% lighter than lashes currently on the market. High end quality without the high end price. Thin, flexible band fits most eye shapes.



Bold #1
11480

Bold #2
11481



Dual Edge
9973



Blue
9975



Purple
9976

CALA FASHION STRIP LASHES

CALA®



Glitter In Body
7936



Glitter At Base
7937



Pink With Glitter
7938



Pink Feathers
7940



Purple/Black Duo
7941



Silver/Black Duo
7942



Pink Stones
7871



Clear Stones
7864