

**MEN'S**

**GROOMING**



# SINCE 1970 BARBER MARMARA

Marmara Cologne began its production in 1970 with special essences that Rinaldo Marmara brought from France. The range includes colognes, perfumes, room fragrances, cologne creams, shaving gel, aftershave, hair care, styling products, beard oil, clothing & much more. Barber Marmara is one of the biggest industrial alcohol buyers in Europe, & is widely adopted around the world, currently exporting to 54 countries & 6 continents.

EAU DE COLOGNE - Protects the skin from irritation & redness. Helps to soothe & refresh the skin.

<p>No. 1 50ml 500ml (Glass)</p> <p><b>19212</b> <b>19225</b></p>	<p>No. 2 50ml 500ml (Glass)</p> <p><b>19213</b> <b>19226</b></p>	<p>No. 3 50ml 500ml (Glass)</p> <p><b>19214</b> <b>19227</b></p>	<p>No. 4 50ml 500ml (Glass)</p> <p><b>19215</b> <b>19228</b></p>
<p>No. 5 50ml 500ml (Glass)</p> <p><b>19216</b> <b>19229</b></p>	<p>No. 6 50ml 500ml (Glass)</p> <p><b>19217</b> <b>19230</b></p>	<p>No. 7 50ml 500ml (Glass)</p> <p><b>19218</b> <b>19231</b></p>	<p>Cologne Classic Lemon 5 Litre <b>19285</b></p>

7 x 50ml Mix Spray Set **19219**

<p>150ml No. 21 <b>19220</b></p>	<p>No. 22 <b>19221</b></p>	<p>No. 23 <b>19222</b></p>	<p>No. 24 <b>19223</b></p>	<p>No. 25 <b>19224</b></p>
<p>Cream Cologne, 400ml No. 1 <b>19254</b></p>	<p>No. 2 <b>19255</b></p>	<p>No. 3 <b>19256</b></p>	<p>No. 4 <b>19257</b></p>	

## SHAVING & BEARD CARE

<p>Shaving Gel No. 76 500ml 1000ml</p> <p><b>19259</b> <b>19263</b></p>	<p>No. 77 500ml 1000ml</p> <p><b>19260</b> <b>19264</b></p>	<p>No. 78 500ml 1000ml</p> <p><b>19261</b> <b>19265</b></p>	<p>No. 79 500ml 1000ml</p> <p><b>19262</b> <b>19266</b></p>	<p>Sandalwood Beard Oil 30ml <b>19258</b></p>
---	---	---	---	---



HAIR CARE

Keratin Shampoo  
1150ml  
19267



Argan Shampoo  
1150ml  
19268



Keratin Conditioner  
1150ml  
19269



HAIR STYLING

Hair Gel  
500ml  
No. 33  
19270



No. 34  
19271



Powder Wax  
20g  
19272



Hair Spray No. 16  
400ml  
19273



Hair Spray Monster  
750ml  
19274



Sea Salt Poseidon Spray  
200ml  
19275



Clay Wax  
100ml  
19277



Paste  
100ml  
19278



Pomade  
100ml  
19279



Aqua Wax  
150ml  
Royal  
19284



Tampa Tobacco  
19283



Cream Wax  
150ml  
19282



Matte Wax  
150ml  
19280



Spider Wax  
150ml  
19281



Made in France. For 30 years, Hairgum has created products that are part of men's daily beard & hair care routines. Already a pioneer in styling waxes 20 years ago, Hairgum has kept at the forefront of modern cosmetic trends, & has developed effective formulas for all men's styling & grooming needs. Innovative textures & fragrances for the professional & consumer alike with an original, offbeat look & feel.

**Strong Pomade**

Ultra-concentrated & enriched with Beeswax. Strong hold with Beeswax fragrance. Creates a shiny finish.

40g **18059**  
100g **18060**



**Classic Pomade**

The original Hairgum styling pomade. Used to create structured styles. Perfect for finishing touches. Creates a textured effect. Imparts shine & hold to short hair while preserving some suppleness. Coco fragrance.

40g **18057**  
100g **18058**



**Water Pomade**

Ultra-concentrated, water-based modelling pomade that is non-greasy to the touch. Washes out with shampoo like a gel. Brings shine to short barber haircuts, & a wet look on wet hair. Citrus fragrance.

40g **18063**  
100g **18064**



**Fiber+ Styling Pomade**

Concentrated, water-based modelling pomade. An enriched, professional formula for a fibrous & light texture that holds all day long. Non-greasy to the touch. Use to create tousled looks. Imparts volume & bounce to short & long hair styles. Coco fragrance.

40g **18065**  
100g **18066**



**Matt Pomade**

Professional, concentrated formula enriched with Kaolin. Ideal for sculpting, fixing & adding texture to short styles without adding shine. Coco-mint fragrance.

40g **18061**  
100g **18062**



**Hair Styling Pomade**

Formulated from natural ingredients including Coconut Oil & Babassu Oil. Creates natural, tousled styles. Hair remains supple & shiny, & the scalp healthy. Can also be used on the beard/ moustache as a nourishing & disciplining balm.

40g **18046**



**Pomade Classic**

Formulated from natural ingredients. Enriched with oils selected for their nourishing & protective properties so the scalp remains healthy. Creates natural, tousled & disciplined styles.

80g **18045**



**Modeling Paste**

Modeling paste with normal hold. One product for shaping & disciplining hair, beards & moustaches without adding a greasy feeling. Great for short hair & classic barber styles. Water-based formula that can be easily removed with shampoo.

125g **18051**



**Strong Gum Wax Certified Organic**

Formulated with ingredients of natural origin that take care of the hair, such as organic Castor Oil for hydration & organic Beeswax for maintenance. Strong hold & a shiny finish. Ideal for classic hairstyles such as pompadours.

80g **18047**



**Matt Gum Wax Certified Organic**

Formulated with ingredients of natural origin which take care of the hair, such as organic Castor Oil for hydration & White Clay which helps cleanse & purify the hair & accentuate its matte effect. Normal hold with a mattifying effect.

80g **18048**



**Dark Cover Gum Wax Certified Organic**

A black coloring wax based on Vegetable Charcoal to camouflage grey hairs. Formulated with ingredients of natural origin that take care of the hair & are easily washed out with shampoo. Disciplines & texturizes hair with light hold.

80g **18049**



**Gel Spray Strong**

Used as a hairspray to fix, sculpt & structure all types of hairstyles. Ultra-concentrated, professional formula that is formulated without aerosol gas. Extra-strong hold.

250ml **18070**



**For Men Beard Care Oil**

Rich in hydrating active ingredients. The perfect beard oil to nourish both beard & skin under the beard. Suitable for all beard types - even the thickest ones. Styles & shapes the beard & moustache with no greasy effect.  
40ml  
**18053**



**Beard Oil**

Made with 100% natural ingredients. A unique combination of 50% Shea Oil & eight carefully selected organic oils. Beards are left highly nourished & the skin is hydrated. Smooths & tames the beard & moustache, & leaves it sleek & soft to the touch without feeling greasy. Light & nourishing texture prevents itchy regrowth.  
40ml  
Vanilla Mint **18067**  
Mandarin Cedar **18068**



**Detangling Beard Oil**

A unique blend of Shea Olein, Biotin & Keratin oils to create a powerful detangling beard oil. Ideally used as a finishing product, it makes it easier to style & shape the beard with no greasy effect. Suitable for all beard types, making them soft & shiny. Beards & skin are left deeply nourished.  
40ml  
**18069**



**For Men Fortifying Beard Oil**

Daily care for beard, skin & hair formulated with organic Castor Oil. Protects the skin & the beard against the external environment while keeping the hair hydrated. Beards are left soft & shiny. For well-groomed men who take care of their beards, hair & skin on a daily basis.  
40ml  
**18052**



**For Men Styling Gel**

Based on 99% ingredients of natural origin which guarantees styling with long-lasting hold. The solution to sculpt your hair & hydrate it thanks to organic Coconut Water contained in its formula.  
125g  
**18050**



**For Men Body, Hair & Beard Shampoo**

1 product, 3 uses: to gently wash hair, beard & body. Thanks to its innovative, professional formula based on Arnica Montana, this shampoo deeply cleanses the hair & beard while being gentle to the skin & scalp. Hair & beard are left clean, shiny & silky, while the skin & scalp are cleansed & softened.  
200g  
**18054**



**Transparent Shaving Gel**

A unique combination of organic certified ingredients such as Aloe Vera, Prickly Pear & Shea Olein. Its transparent texture ensures a precise shave that allows you to outline the contours of your beard with precision. Thanks to its Aloe Vera-based formula, the blade glides more easily & does not irritate the skin.  
125g  
**18055**



**Multi-Purpose Face, Body & Hand Cream**

A multi-purpose cream formulated with Aloe Vera, Shea Butter & Shea Olein. Moisturizes without greasing any part of the face, hands, or parts of the body that tend to be drier. Moisturizes the face, hands & other drier parts of the body such as elbows.  
125g  
**18056**



A complete range of products to meet specific demands of men's style & care. An evolution of the latest trends tailored to contemporary men's care. Features products researched & developed from traditional formulas for modern solutions. A stylish, yet classic, reinterpretation for today's man.

**Shaving Cream**

Soft shaving cream which facilitates the razor to effortlessly glide over the skin with maximum comfort & effectiveness. Creates a barrier between the skin & razor to prevent irritation. A moisturizing & nourishing formula that soothes the skin to prevent redness, irritation, dryness & itching. Skin is left soft & invigorated.

**Use:** Apply on damp skin & shave as normal.

**Tip:** Great for all-over face & head shaving with minimal chances of irritation, bumps & itching.

150ml  
**16086**



**Shave Oil**

An emollient-rich, nourishing & protective shaving oil for sensitive skin types to achieve precision shaving. Creates a barrier on the skin to allow for an extremely close shave, providing comfort on sensitive areas of the face or head. The oil's composition ensures every pass of the razor is as effective as possible, reducing the need for multiple passes on a single area which can cause irritation & redness. A soothing formula that works even after shaving to prevent dryness.

**Use:** Heat the skin with hot water, apply a few drops on damp skin & massage on areas to be shaved. Shave as normal. Additional shaving cream can be applied on top of oil if preferred.

50ml  
**16087**



**After Shave Cream**

Soothing cream which calms, moisturizes & invigorates the skin after shaving, relieving the skin of any redness, irritation or itching. A delicate blend of nourishing ingredients & oils quickly work to return the skin to its normal, healthy state after shaving. Leaves the skin feeling hydrated & protected, a crucial protector when the skin is sensitive.

**Use:** Apply a small amount to the skin after shaving, massage into the skin until absorbed.

150ml  
**16088**



**Beard Wash**

A gentle beard & face wash for all skin & hair types. Works to remove impurities without stripping natural oils which can lead to dryness & flaking. The beard & face is left feeling fresh, polished & hydrated with a signature fragrance.

**Use:** Apply warm water to face & hands, apply a few drops into hands & emulsify. Apply to face in circular movements & rinse.

150ml  
**16089**



**Amber Beard Oil**

Sometimes beard hair just needs a lift & spruce. These beard oils work to create a healthy shine & glow for rough, coarse & textured beard hair which is notoriously difficult to liven & control.

Tidies, softens, protects & moisturizes the beard with a smoothing effect that tames frizz & fly-away strands. Dryness, itching & irritation are immediately treated with the effects lasting all day. Imparts a natural, delicate fragrance.

**Use:** Apply a few drops of oil to the hands or directly onto the beard & brush or comb through. Pair with a beard balm for additional styling.

50ml  
**16092**



**Moustache Wax**

Getting your moustache style on point is vitally important & requires a special combination of ingredients. This moustache wax defines & shapes moustache hair in any way possible & provides maximum control over the shape of goatees & moustaches. Hair is left soft & malleable so your chosen style lasts all day. Small tin size makes it ideal for on-the-go touch-ups.

**Use:** Work a small amount of the product with your fingers & apply to the moustache or goatee. Work through with fingers or comb for desired shape.

30ml  
**16091**



**Black Carbon Shampoo**

A game-changing shampoo infused with black carbon, rich in vitamins, minerals & antioxidants for healthy hair.

A secret blend of ingredients brighten & tone white or grey hair to enhance its appearance by removing unwanted yellow & brass tones & reflections. Natural grey or white hair is left rich in color, shiny, healthy & smooth.

250ml  
**16101**



**Styling Gel**

Styles & defines hair with a flexible hold that can be adjusted & fixed throughout the day. Provides body, volume & shine to all hair types while preventing dryness. Can be activated by adding water & re-styling.

**Use:** Apply on dry hair for a texturizing & natural finish or on damp hair for a chiseled, defined look.

150ml  
**16096**



**Black Styling Gel**

Modeling hair gel for extra shine, enriched with ingredients that cover white or grey hair with a natural black tone. Transforms styles & overall looks in a discreet manner. The color's reflective & gentle composition means that no one will be able to tell it is artificial color.

Delivers incredible shine & color is easy to control as it washes out with shampoo. Does not contain alcohol & will not leave any residue or stain clothes or pillow cases.

100ml  
**16103**



**Matte Paste Strong**

A strong styling paste for the most demanding styles. Provides texture, definition & maximum control for chiseled & sculpted looks with a special matte effect. Ideal for hard, contemporary looks with a disheveled effect, especially on short hair.

**Use:** Apply small amount of product in the palm of hands & evenly distribute on dry hair. Style as desired with hands, comb or brush.  
100ml  
**16097**



**Extra Matte Clay**

A rich & luxurious clay with a natural, matte finish for demanding styles that need to last all day. Creates volume & definition with extra matte styling for a more disheveled, messy, contemporary style.

**Use:** Work a small amount of product between palms, evenly distribute on dry hair & shape.  
100ml  
**16098**



**Shaping Fibrous Paste**

The ideal styling paste for switching up or re-working styles during the day. Provides shape & natural definition with a semi-gloss look & a flexible, structured end result that can be changed & altered throughout the day.

**Use:** Work a small amount of product between fingers, apply to dry or slightly damp hair to create desired look, styling each individual lock.  
100ml  
**16100**



**Eau De Toilette**

A light, fresh, gentle & invigorating fragrance to invigorate & refresh the skin.  
100ml  
**16115**



**After Shave**

Fresh, relaxing & therapeutic after shave spray to return sensitive skin to its healthy base. Use after shaving to nourish & reinvigorate the skin so relieve irritations, dryness & redness.  
400ml



Classic  
**16117**

Musk  
**16118**

**Vegetable Soap**

For luxurious shaving. Ideally paired with a shaving brush for better application to the face.

Enriched with natural extracts & oils including Coconut Oil & Sweet Almond Oil to create a nourishing shaving soap for a close, effective shave.  
150ml  
**16116**



**Beard Club Hemostatic Sticks**

Stops bleeding with soothing & moisturizing action.  
20 Pieces  
**19376**



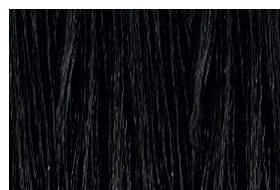
**Beard Club Hemostatic Sticks Display Stand**  
60 Packs of 20  
**19377**



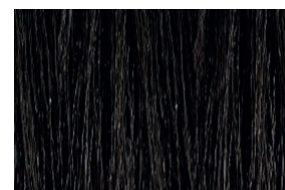
**Men's Care Hair & Beard Color Kit**

Professional beard & hair dyeing without ammonia. Covers gray hair in just 5-10 minutes. Thanks to its cool pigmentation, it neutralizes the appearance of unwanted warmth for a natural result. No ammonia required. Mix ratio - 1:1

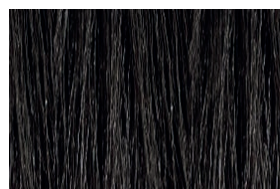
For hair: 5-10 minutes (5 minutes for a lighter result - 10 minutes for a darker result)  
For beards: 10-20 minutes



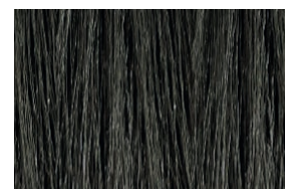
Black 2/3  
**19375**



Dark Brown 4/5  
**19378**



Light Brown 5/6  
**19379**



Light Blond 7/8  
**19380**

**Hair Color Gel**

A styling gel base formulated with innovative polymers & no greasy substances to deliver styling control with natural-looking color. The color pigments are easily absorbed on the surface of the hair shaft & provide a natural, reflective tone so no one can tell it is artificial color. Available in 4 different tones of grey for flexibility. Color can be controlled by re-applying for more intense color or washing out for gradual reduction in color intensity. In addition to color, the gel adds definition, immediate shine, strength & control for sculpted looks. Results will last up to 4 weeks. Hair will have renewed strength & natural-looking color for a fresher, more youthful look. 60ml

Hair Color Gel Color Chart 16109



**Hair Color Gel Activator**

An activator that produces semi-permanent color for head hair.

Mix with the Hair Color Gel to create a soft mousse that, when applied & emulsified directly on the hair, masks white & grey hair in a quick, practical & discreet manner.

An easy & effective way of applying color for a better, long-lasting, all-round appearance.

**Note:** this activator can only be used with the Hair Color Gel.

150ml  
16108



**BARBERING HAIR DRYERS**

**Vanquish Dryer**

Offering 4 heat & 3 speed settings with a powerful brushless motor, the Wahl Vanquish™ 1600 Watt Professional Hair Dryer sets a new standard for hair styling.

- 1600 Watt.
- 4 heat & 3 speed settings.
- Weight: 320g.
- Includes 2 magnetic concentrator nozzles (narrow & wide) & magnetic diffuser.
- SmoothTone™ motor removes harsh frequencies & noise.
- Integrated ionic function reduces frizz while improving drying speed.
- LED setting indicator.
- Auto-clean function enhances cleaning convenience.
- 3 meter professional power cord.
- Hanging loop for storage.

19668



**Wahl 5 Star Barber Dryer**

Classic chrome finish & sturdy design, this dryer fits in in any trendy barbershop.

Intended for use on all lengths & types of hair.

**Features:**

- Ionic technology with tourmaline grill for faster drying & better shine
- 2 speed settings & 3 heat settings
- Concentrated airflow
- Cold shot technology to hold styles in place
- Removable filter that is easy to clean
- Lint guard at back of dryer keeps dryer clean & improves durability
- 2200 Watt motor
- 2 concentrator nozzles included

18539



**Gamma + Barber Phon**

A traditional design in black finish. A dedicated facial hair dryer to keep beards & moustaches looking their absolute best. One of the only hair dryers designed for this kind of coarse hair.

- 2000W
- Insulated heating element so handle stays cool
- Tourmaline-coated grill
- Ergonomic grip
- Separate hair & beard settings
- 2 heat settings
- Cold shot button
- Includes 2 concentrator nozzles & a dryer hook

18377





Styling Waxes

Can be applied on wet or dry hair.  
155ml



Aqua Strong 1  
18485



Aqua Ultra Strong 2  
18486



Matte Paste 3  
18487



Aqua Grooming 4  
18488



Aqua Mega Strong 5  
18491



Clay Natural Look 6  
18616



Pomade 7  
18489



Cool Bright 8  
18490



Aqua Gel 9  
18617



Spider Effect 10  
18620

Hair Wax Stick Strong Hold  
A concentrated styling treatment with strong hold that imparts shine & luster. Work a small amount into hair for a disciplined result.  
75g  
19064



Hair Spray

Strong hold factor hair spray for those times you don't want to use traditional hard-setting gels. Maintains flowing locks with a natural look & feel.  
400ml



Glued Extra Strong 01  
18494



Rock Mega Strong 02  
18495



Gum Ultimate Hold 03  
18497



Matte Strong 04  
18496

After Shave Cream Cologne

Works to moisturize the face, & helps protect skin from nicks, skin breakouts, razor burns & cuts. Leaves the skin feeling refreshed & hydrated.  
400ml



Exclusive  
19065



Desert  
19066



Forest Rain  
19067



Magma  
19068



Tsunami  
19069

Hair Gels - get the style that stays put!

Pro Vitamin Styling Gel 01  
200ml **18498**  
700ml **18499**



Strong Styling Gel 02  
200ml **18500**  
700ml **18501**



Ultra Strong Styling Gel 03  
200ml **18504**  
700ml **18505**



Gum Styling Gel 04  
200ml **18506**  
700ml **18507**



Mega Strong Styling Gel 05  
200ml **18502**  
700ml **18503**



Black Hair Gel

Classic Turkish styling hair gel with added black hair pigment. Covers white & grey hair for a darker appearance while imparting brightness & shine.

250ml  
**18523**



Styling Dust

Provides volume, texture, stability & matte effects that last throughout the day. Prevents accumulation of oils on the scalp & hair. Apply on dry hair & style.

20ml



Extra Strong  
**18508**

Flexible  
**18509**

Strong  
**18510**

Volumizing  
**18511**

Hair Grooming Tonic  
Revitalizes hair roots  
& gives refreshing  
nourishment to dry &  
lifeless hair. Increases  
volume, shine &  
softness. Apply to clean  
hair directly on the scalp  
& work in with fingertips.  
Do not rinse.  
300ml  
**18512**



Sea Salt Texturizing Spray  
Adds visible texture &  
dimension to hair. Creates  
plumping & volumising  
effects for bouncy & lively  
results.  
300ml  
**18613**



After Shave Balm  
This after shave liquid is a soothing &  
non-irritating formula for just-shaved  
skin. It imparts a cooling  
sensation & stimulates  
the skin so blood  
underneath goes to  
the surface to repair  
any damage caused by  
sharp razors.  
300ml  
**18614**



Brillantine Shiny Styling Cream  
Cream of choice for intense shine.  
Transforms hair into any style with  
amazing sparkle. Its smooth, creamy  
formula seamlessly blends into the hair  
& allows for maximum control. As the  
cream sets, it creates shine & structure,  
ideal for any fan of the wet look.  
155ml  
**18493**



Spray Cologne - takes care of your skin after shaving. Its special formula with Allantoin helps to reduce razor burn & protect irritated skin post shaving. Gives a feeling of coolness & freshness with its amazing scent. Apply to face after each shave.  
400ml



Magma  
**18517**



Desert  
**18518**



Tsunami  
**18519**



Forest Rain  
**18520**

Anti Razor Burn Shaving Gel  
Specialised shaving gel that prevents  
uncomfortable razor burn.

500ml **18521**  
1000ml **18522**



Hair Shampoo  
100% salt free.  
800ml  
Biotin & Collagen  
For compromised,  
sensitive, brittle hair  
prone to breakage &  
falling out.  
**18603**



Amino Keratin  
Ideal hair exposed to  
excessive heat & salon  
chemicals.  
**18604**



Pure Argan  
Transforms dry,  
dull & frizzy  
hair to shiny &  
manageable.  
**18605**



Daily 2-in-1  
Gentle everyday  
cleanser. Maintains a  
clean appearance &  
feeling.  
**18606**



Hair Mask  
350ml



Biotin & Collagen  
For compromised, sensitive, brittle hair prone to breakage  
& falling out. Improves hair strength & health.  
**18608**



Amino Keratin  
Ideal hair exposed to excessive heat & salon chemicals.  
Potent ingredients penetrate the hair for lasting repair.  
**18607**



Pure Argan  
Transforms dry, dull & frizzy hair to shiny & manageable. Hair  
is immediately calmed & made more flowing & healthy.  
**18609**

Hair Serum  
100ml

**Biotin & Collagen**  
For compromised, sensitive, brittle hair prone to breakage & falling out. Works to improve hair strength & health, helping to bring hair back to its original state.  
**18611**



**Amino Keratin**  
For compromised, sensitive, brittle hair prone to breakage & falling out. Provides lasting repair & protective action throughout the day.  
**18610**



**Pure Argan**  
Transforms dry, dull & frizzy hair to shiny & manageable. Perfect for those with frizzy hair that just will not style, as well as hair that has fly-away strands & static.  
**18612**



Hair Fiber Spray, Medium Brown  
Paraben-free formula with natural extracts to make hair visibly fuller. Fills in sparse areas of hair with natural hair-building keratin. Seamlessly blends with natural hair thanks to Nano Technology.

Fibers are resistant to rain, perspiration & other environmental exposures. Suitable for all hair types.  
150ml  
**17601**



Peel Off Mask  
Cleans away dead cells, blackheads, dirt & oil on the face. Rejuvenates the skin thanks to herbal active ingredients, leaving a refreshing look & feel.  
150ml

Black  
Detoxifying activated carbon.  
**17605**



Gold  
Radiant skin restoration.  
**17606**



Semi-Permanent Hair Color  
Color without ammonia or peroxide. Apply directly to hair without any oxidant mixture on pre-lightened hair for best results. Color effects gradually fade after 8-10 shampoos. Also suitable for facial hair.  
125ml

Black  
**17603**



Brown  
**17604**



Facial Scrub Gel  
Natural extracts renew the surface skin layer using gentle exfoliation, revitalizing it without irritation. Cleans pores & removes impurities. Skin is left radiant, fresh & smooth, all without any dryness.  
350ml

Apricot  
**17926**



Strawberry  
**17927**



3-in-1 Skin Mask  
Triple mineral action with salicylic acid & menthol crystals. Purifies, unclogs pores & mattifies the skin.  
350ml  
**17928**



Beard Oil 02  
Contains a mix of Argan oil, Almond oil & Jojoba oil for maximum nourishment.  
100ml  
**15113**



Beard & Moustache Shampoo 01  
Cleans & softens beard while protecting skin.  
180ml  
**15114**



Agarwood, also known as oud, oodh or agar, is a dark, resinous heartwood that forms in large evergreen trees. First-grade agarwood is one of the most expensive natural raw materials in the world. Oud oil is distilled from agarwood, which fragrance is complex & pleasing. Oud fragrance & oil is gaining high recognition & desirability around the world.

**Beard Oil**  
Pump - Lightweight, high-performance blend of Oud Wood Extract, Argan & Grapeseed Oils. Smooths, softens & takes the edge off your brittle whiskers. Relieves itching & adds lustrous shine. 44ml  
**12588**



**Firm Hold Gel**  
Natural shine with style control to shape & sculpt even the hardest- to-achieve hair styles. Durable & non-tacky. 198ml  
**12589**



**Men's Grooming Crème**  
Light hold/gloss finish, non-greasy. 85g  
**13992**



**Beard Butter**  
Acts as a hydrator for a well-coifed beard. Aids to groom & smooth dry skin & beard. 85g  
**13993**



**Fiber Texturizer**  
Sunflower Seed & Argan Oil nourishes, lubricates & prevents moisture loss. Adds texture & definition, matte finish. 85g  
**12590**



MKS eco



Marrakesh is now MKS eco - A revived brand with new packaging & sustainable beauty. MKS eco is extending their responsibility in their packaging & production. This includes switching product packaging from plastic to more sustainable materials like glass & aluminium, & using recycled plastics & materials. Packaging is 100% recyclable,

& the products themselves are completely natural & non-harmful to everyone. MKS eco is continuing their commitment towards 100% vegan & cruelty-free products, & environmentally conscious manufacturing. Only sustainably sourced, naturally derived ingredients are used, good for the body & environment.

**Double Hop Men's 2-in-1 Shampoo & Body Wash**

Rejuvenate from head to toe. Formulated with exotic Hemp Seed & Argan Oils, this luxurious wash & cleanser leaves hair & skin feeling & smelling top notch.

- Convenient double use formula.
- Gentle cleansing.
- Enhances manageability.
- Strengthens hair cuticle.

296ml  
**18231**



**Stout Men's Conditioner**

Ultimate hydration treatment. Made with a rich fusion of Hemp Seed & Argan Oils, & packed with essential fatty acids. Provides all the nutrients needed to leave hair looking great all day.

- Restores moisture.
- Enhances manageability.
- Strengthens hair cuticle.

296ml  
**18232**



**Imperial Men's Beard Oil**

Give your beard the royal treatment. Whether groomed close or big & bold, this nutrient-rich blend of Hemp Seed & Argan Oils makes beards touchable & skin feeling great.

- Calms & controls wild facial hair by making hair more pliable.
- Softens & adds moisture to beard & skin.
- Adds shine for healthier look.
- Intense fragrance.

60ml  
**18233**



**Bomber Men's Shave Cream**

Treat your face to a fresh, clean shave. Enriched with Hemp Seed & Argan Oils, the skin will be free from irritation, resulting in a smooth shave every time.

- Softens beard to reduce resistance to the razor.
- Moisturizes & leaves skin smooth.
- Soothes & reduces irritation.
- Intense fragrance.
- Conditions sensitive skin.

296ml  
**18234**



**Lager Men's Styling Paste**

Gives hair flexible definition. This versatile styling paste works wonders as a volumizer & texturizer, giving you the tool you need to create touchably-soft styles of your choice.

- Provides flexible & workable medium hold.
- Adds texture & volume.
- Creates touchable, soft styles.
- Gives great definition.

113g  
**18235**



**Porter Men's Styling Gel**

Give your hair light hold or a tight grip. This alcohol-free formula, infused with Argan & Hemp Seed Oils, makes it easier to comb & style hair with your preferred hold, all without stiffness or flaking.

- Engineered to give varying hold based on amount used - use more for stronger hold.
- Conditions with a nice "slip" for combing & placing.
- Stays flexible so it never flakes.
- Nourishes & adds shine.

236ml  
**18236**



**Pilsner Men's Hand & Body Lotion**

Protect the skin from drying in any rough & tough situation. This lightweight & ultra-moisturizing lotion is made with a nutrient-rich blend of Hemp Seed & Argan Oils to keep the skin feeling soft & smooth in any climate.

- Moisturizes skin.
- Restores skin softness.
- Restores skin flexibility & elasticity.

296ml  
**18237**



**Double Hop 2-In-1 Shampoo & Body Wash**

Rejuvenate from head to toe with this amazing cleanser blended with powerful natural ingredients.

Key ingredients are Hemp Seed & Argan Oils. This luxurious wash leaves your skin & hair feeling awesome. Plus, you will smell great, too!  
355ml  
**12279**



**Stout Conditioner**

Give your hair the ultimate hydration treatment, packed with essential, fatty acids.  
355ml  
**12280**



**Imperial Beard Oil**

Whether groomed close or big & bold, you & your beard will feel "imperial" with this oil, making your beard feel touchable & your skin great.  
60ml  
**12282**



**For Men Four Pack**

For the distinguished gentleman. High quality natural ingredients, including Argan & Hemp Seed Oils, without harsh ingredients. Reveals gorgeous, healthy hair. All products are 100% vegan & cruelty-free.

Includes:  
- Double Hop 2-in-1 Shampoo & Body Wash, 355ml  
- Stout Conditioner, 355ml  
- Porter Styling Gel, 207ml  
- Lager Styling Paste, 118ml - versatile styling volumizer & texturizer for flexible styling & touchably-soft hair.  
**17504**



**Travel Kit**

Hit the road with Marrakesh for Men.

Includes:  
- Double Hop 2-in-1 Shampoo & Body Wash, 100ml  
- Bomber Shave Cream, 100ml  
- Porter Styling Gel, 100ml  
**12241**



**2-in-1 Beard Conditioner**

Dual-purpose face moisturizer & beard conditioner, leaves hair soft instead of bristly.  
89ml  
**11909**



**Beard Balm**

Seals in moisture, controls facial hair, suitable for all beard lengths.  
59g  
**11910**



**Moustache Wax**

Ideal for moustache, beard, sideburns & eyebrows for styling & color touch-ups. Falls in a touch of color & helps keep hair in place.  
14g  
Brown **11921**  
Black **11922**  
Neutral **11919**  
Chestnut **11920**



**Beard & Tattoo Oil**

Moisturizes & conditions. Contains a unique blend of special oils & conditioners that ensure your beard, tattoo & skin will look & feel their very best. You will instantly see & feel the difference in your beard &, when applied to your ink, the depth & clarity will amaze you.  
30ml  
**11911**



**Shave Lather**

Produces a perfect lather for the closest, smoothest, fastest shave from a tube. Leaves face clean & refreshed.  
177ml  
**11915**



**Head Shave Gel**

Clear, moisturizing shave gel for your scalp, giving just the right amount of slip for the closest scalp shave possible. Stays clear for you to see every detail.  
177ml  
**11916**



**NISHMAN**



**Fresh Active Shaving Gel**

Oil-based waterless shave that allows the blade to glide. Clear, non-foam gel. Softens beard, opens pores & relaxes skin.  
400ml  
**14868**



Products without compromise, focusing on only the finest quality ingredients to cleanse, nourish & protect. Woody's is directed at the man who is looking for a simple, comfortable daily regimen that offers basic, no-frill products that smell good & get the job done. Woody's products have been developed with the intent of making your professional

recommendation a simple & enjoyable experience for you & your clients. The keep-it-simple approach is the foundation of Woody's philosophy & the best way to recommend Woody's products to your male clients. By following this advice, he will remember what to do with Woody's products when he gets home.

DEODORANT

Love Grenade Spray  
Body & laundry spray.  
150ml  
9098



SHAVING

Shave Lather  
Radical shaving technology transforms this moisturizing shave cream into a lather without a brush.  
177ml  
9095



Shave Relief Balm  
This light, non-greasy, soothing post-shave balm restores moisture balance as it smooths & calms the skin.  
177ml  
9096



WOODY'S STYLING PRODUCTS

Mold It Styling Paste  
No shine, just great, flexible hold.  
100g  
13603



Brickhead Matte Styling Gel  
Really matte, really firm, no shine, just style control.  
118ml  
13604



Messy Stick Wax  
Can be applied directly on hair or onto palms. Flexible & moldable wax.  
75g  
13605



Cream  
Flexible styling cream. Controls curly, wavy hair. HOLD: Medium. LOOK: Shiny  
96g  
9084



Web  
Pomade with perfect balance of flexibility & firmness.  
HOLD: Medium. LOOK: Matte  
96g  
9085



Mega Firm Gel  
Gel for super-hold without any flaking.  
HOLD: Firm  
LOOK: Shiny  
355ml  
9086



Wood Glue  
Extreme styling hair gel without any flaking.  
HOLD: Firm  
LOOK: Shiny  
113g  
9087



Tuff Spray  
Volumizing matte texture spray. Builds body from the roots out to the ends. Creates volume & texture.  
125ml  
13606



12 Piece Matte Styling Centre

Contains:  
- 3 x 13603  
- 3 x 13606  
- 3 x 13605  
- 3 x 13604  
13602



BEARD CARE

Beard & Tattoo Oil  
Ultimate control & shine. Adds shine to your beard/tattoo & prevents dry, itchy skin. Smooths, moisturizes & invigorates skin & facial hair.  
30ml  
13611



Stache Wax  
Classic styling to mold your moustache. Lasts all day & easily washes out. Safe for sideburns, eyebrows & beard.  
14g  
Single 13607  
6 Piece Display 13608



Beard Wash  
Distinct fragrance, provides deep cleansing to remove dirt & loose skin.  
190ml  
13614



Vines Vintage is an inspired collection of modern barbering products designed to finish & style the male hair & beard. Vines Vintage barbering range will deliver exceptional results for you & clients with high performance products. You will achieve outstanding results, a must have for all gentlemen's salons.

**FACIAL HAIR CARE - True to the routes of authentic barbering techniques, Vines Vintage styling & care offers contemporary products to deliver barbering with attitude.**

**Beard Oil**

Luxurious beard oil infused with Jojoba & Sweet Almond Oil to help hydrate & care for dry, unruly beards. An integral part of the beard grooming process, this unique blend will aid in the creation of a natural style.  
100ml  
**11369**



**Shave Cream**

This luxurious shaving cream will lather into a creamy texture for a superior shaving experience. Enhanced with Jojoba extract & Aloe Vera for added moisturization, comfort & closeness of shave without irritation.  
125ml  
**11370**



**Beard Balm**

Luxurious balm that hydrates & moisturizes, helping to improve skin & hair condition.  
125ml  
**12300**



**Moustache Wax**

Formulated with honeycomb beeswax to give ultimate hold with a polished finish. Infused with Japonica Seed Oil to help hydrate & moisturize during the finishing process.  
25ml  
**11706**



**After Shave Balm**

Intensely rich gel formula hydrates & soothes dry, just-shaven skin. Infused with extracts of Argan Oil & replenishing Vitamin E with a calming blend of Witch Hazel & Jojoba oils to soothe shaven skin & prevent irritation.  
125ml  
**13842**



**Pre Shave Oil**

Expertly formulated blend of natural oils helps soften the beard & protect against razor burn, shaving nicks & irritation for a close & comfortable shave.

Directions for use: Massage oil directly onto beard/stubble from skin to end until it leaves a barely-visible shine finish. Layer up with Vines Shaving Cream & follow with a shave treatment.  
100ml  
**13280**



**Vines Vintage Barber Display Stand**

A compact retail kit designed to offer a sleek selling opportunity for any retail space.

- Includes:
- 3 x Fiber Pomade, 125ml
  - 3 x Matte Pomade, 125ml
  - 3 x Maxi-Gum, 125ml
  - 3 x Maxi-Gum, 300ml
  - 3 x Shave Cream, 125ml
  - 3 x Beard Oil, 100ml
  - 3 x Moustache Wax, 25ml
  - 1 x Vines Vintage Salon Display Stand
- 11776**



**OSMO**



**DALON**



**Oil-Free Grooming Tonic**

A lightweight, oil-free tonic to stimulate the scalp, cleanse the hair & refresh all styles without weighing the hair down. Can be used throughout the day to help refresh styles.  
300ml  
**13819**



**Shave Spray**

A nourishing, soothing grooming spray for precision shaving & controlled razor glide. This multi-purpose grooming gel replaces the need for water during shaving as its hydrating gel consistency allows for moisture to remain on the face. Features a refreshing, spearmint fragrance with Aloe Vera.  
250ml  
**13820**



**Beard Complex**

The perfect solution for dry, damaged beards & wayward styles. Infused with Argan Oil & Vitamins A&E to nourish, moisturize & restore the hair to pristine condition. Also brings tattoos to life!  
10ml **12292**  
100ml **12293**



**Black Hair Gel**

Black styling gel that provides natural color to cover white or grey hair. Color & style control lasts until next wash. Leaves no residue in the hair. Apply small amount for a natural result, or a large amount for more intense color.  
300ml  
**18005**





Vines Vintage is an inspired collection of modern barbering products designed to finish & style the male hair & beard. Vines Vintage barbering range will deliver exceptional results for you & clients with high performance products. You will achieve outstanding results, a must have for all gentlemen's salons.

**STYLING**

**Matt Pomade**  
This natural texturizer with a matte finish provides firm hold without weighing the hair down for long-lasting results.  
125ml  
**11371**

**Fiber Pomade**  
This water-soluble pomade is ideal for diverse styling or the slick-back look, great flexible hold which is perfect for restyling.  
125ml  
**11372**

**Maxi-Gum**  
The ultimate gum formula with maximum hold, achieve extreme styles or the polished look. Fast-setting gum with a subtle gloss which will hold throughout the day.  
125ml **11373**  
300ml **11374**

**Texturising Cream**  
Versatile product offers weightless texture & flexible, long-lasting hold for the perfect "undone" look.  
125ml  
**12299**



**HAIR TONICS & LOTIONS**

A collection of classic hair tonics & lotions which are perfectly designed to refresh & invigorate the scalp, promoting cleanliness while stimulating the hair follicle.

**American Bay Rum**  
Legendary hair & scalp tonic with a classic aroma of Bay leaves & Cloves.  
200ml  
**7863**  
1 Litre  
**18434**

**Eau De Quinine**  
Revitalizing hair & scalp tonic with an uplifting aroma of Vanilla & Sandalwood.  
200ml  
**7868**  
2 Litre  
**11367**

**Eau De Portugal**  
Classic hair & scalp tonic with a tangy, citrus aroma, inspired by the ancient Portuguese formula, it will revitalize hair & scalp for long-lasting, fragrant results.  
200ml  
**7870**  
2 Litre  
**11368**

**Coconut Oil Brilliantine**  
A barbering classic hair tonic for the well-groomed gent, it will stimulate & revitalize the scalp for healthy, glossy results.  
200ml  
**7865**

**Eclipsol Plain**  
Traditional hair tonic treatment which will condition & style the hair, this water-based lotion provides moisturizing without weighing the hair down.  
200ml  
**7866**

**Eclipsol with Oil**  
The finest oil treatment to condition & style the hair, blended with Basil, Sandalwood & White Tea to deeply nourish the hair & scalp.  
200ml  
**7867**



**TRIMMERS**

**JAGUAR J-CUT LINER**  
A mini trimmer brings eyebrows & beards quickly into shape. Trims eyebrows accurately to 4mm & 2mm. Complete with batteries.  
**10380**



**ASSORTED MEN'S BRUSHES**

Beard Brush, Boar Bristle



Small  
**15936**

Large  
**15935**

Shaving Brushes  
Small  
**15835**

Large  
**15836**

Fade Brushes  
Soft, yet firm bristles that remove cut hair to clearly define fade work, without hair sticking to the scalp, helping to identify any imperfections.

Handle  
**15837**

Large  
**15838**

Neck Brush  
Synthetic Bristles  
**15834**

ASSORTED SHAVING BRUSHES

3 Claveles Sow Hair  
**3093**

3 Claveles Horse Hair  
**3092**

Diane Faux Badger Hair  
**5294**

Soft Bristles  
**15339**

MEN'S GROOMING TOOLS & ACCESSORIES

Plastic Shaving Mug  
**14281**

Porcelain Shaving Bowl  
**13661**

Plastic Men's Shaving Bowl  
**12167**

Porcelain Shaving Bowl  
**15343**

3 Claveles Dish for Barber Soap  
A classic stainless steel design that will last many years, even in busy barbershops.  
**3834**

Razor Wiper, Rubber  
Wipe residue from razor on this dish.  
**14280**

Barber Soap.  
Ideal for shaving brushes.  
75g  
**3833**

**focus**  
Italy

**MEN'S GROOMING TOOLS & ACCESSORIES**

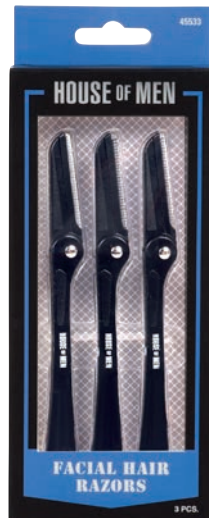
2 Piece Mustache Grooming Set  
Specialized facial hair scissor & comb.  
**17747**



2 Piece Men's Nail Clipper Set  
Large & small nail clipper set.  
**17742**



3 Piece Men's Facial Hair Razors  
For precise facial hair removal & shaping.  
Black  
**17743**



4 Piece Men's Manicure Set  
Includes:  
- Toenail Clipper  
- Nail Scissor  
- Nail Clipper  
- Metal Nail File  
**17745**



Men's Charcoal Nose Pore Strips  
Detoxifying & deep cleansing. Unclogs pores & helps to remove blackheads & impurities.  
6 pieces  
**17746**



Diane Shaving Razor  
Stainless steel handle.  
NB: Razor must be stropped to sharpen.  
**10455**



diane

Cowhide Razor Strop  
**5291**



Diane Nose & Moustache Scissor, 4 inch  
**10453**



diane

3 Claveles LAIKA  
Barber Scissor, 7.5 inch  
**11788**

For other barber scissor options, please refer to our Scissors section.



Saphir Scissor For Beard & Moustache  
Effectively trims, shapes & details facial hair.  
11cm  
**16802**



**MEN'S GROOMING KITS**



**HIVE Men's Grooming Kit**

Created to tame client's unruly facial hair & create a dapper gentleman by waxing, sculpting & shaping eyebrows & beards to rugged perfection.

Includes:

- 1 x 200cc Compact Wax Heater
- 5 x 50g Sensitive Hot Film Wax Discs
- 1 x Pre Wax Cleansing Lotion 200ml
- 1 x After Wax Treatment Lotion 200ml
- 50 x Mini Disposable Wooden Spatulas
- 1 x Angled Tweezers

**14014**



**MEN'S GROOMING TOOLS & ACCESSORIES**

Beard & Moustache Grooming Kit  
**11986**



Barber Arm Bands for Shirt Sleeves, Pair  
Use to prevent shirt sleeves slipping down for better maneuverability of arms.



Black  
**15344**

Silver  
**15345**

Neck Paper  
Expandable, adhesive, hygienic, waterproof,  
100 pieces per roll, 5 rolls  
**2777**



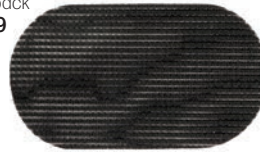
Neck Talc Brush  
**15338**



Neck Brush, Nylon Bristles  
**15340**



Hair Gripper  
2 per pack  
**15049**



Talc Blower  
**14285**



3 Claveles Shaving Brush Stand  
**3094**



The Beard Pro Beard comb  
Shapes your neck & cheek line in just  
minutes for the ideal beard shape.  
**12253**



Men's Combs  
130mm x 28mm  
**12168**      154mm x 27mm  
**12169**



Barber Mat  
48 x 33cm, 3mm thickness  
**18107**



Barber Spray Bottle  
500ml  
**15073**



Just Water Barber Pole Fine Mist  
Water Spray Bottle  
Multi-position, barber pole-themed spray bottle.  
Comfortable in the hand & sprays a fine mist. Can  
be sprayed upside down.  
150ml



White  
**18306**

Chrome  
**18307**

SOFT BOAR BRISTLES - Gentle on sensitive scalps. Best for fine, wavy or curly hair.

Curved Luxe 100% Soft Boar Military, No Handle  
For shorter cuts & fades.  
**16572**



Luxe 100% Soft Boar Military, No Handle  
For shorter cuts & fades.  
**16584**



Curved Luxe 100% Soft Boar, Handle  
For longer lengths.



7 inch  
**16576**

9 inch  
**16585**

Luxe 100% Soft Boar, Handle, 9 inch  
For longer lengths.  
**16582**



MEDIUM REINFORCED BOAR BRISTLES - Gentle on sensitive scalps. Best for thick & curly hair.

Medium Reinforced Boar Military, No Handle  
For shorter cuts & fades.  
**16586**



Medium Reinforced Boar with Handle  
For longer lengths.



7 inch  
**16587**

9 inch  
**16588**

HARD REINFORCED BOAR BRISTLES - Best for very thick hair & tight curls

Curved 2-Sided Hard Reinforced & 100% Soft Boar Military, No Handle  
Soft bristles for fine, wavy or curly hair. Hard bristles for very thick hair & tight curls. For shorter cuts & fades.  
**16590**



Curved Hard Reinforced Boar, Handle, 9 inch  
For longer lengths.  
**16591**



DIANE ORIGINAL NATURAL BRISTLE MEN'S LINE - 100% high quality natural boar bristles.

diane

The Original Club Brush  
Soft bristles, 8 row, 7 inch  
**11498**



Softy Club Brush  
Soft bristles. Camo-printed  
wooden handle.  
**11500**



100% Natural Double Sided  
Club Brush, 7 inch  
Soft bristles on one side & firm  
bristles on the other.  
**10415**



100% Natural 5 Row Styling  
Brush, 8 inch  
Medium firm bristles.  
**10416**



100% Natural 7 Row Styling  
Brush, 8 inch  
Extra firm bristles.  
**10417**



DIANE GENTS BRUSHWARE - REINFORCED BOAR BRISTLE

diane

DIANE NYLON

diane

Club Brush  
7 inch  
**5322**



Wave Brush  
7 inch  
**5323**



Palm Brush  
**5321**



Soft Boar Bristle Brush  
**5956**



Nylon Style Brush  
9 inch  
**5324**



DIANE GENTS BRUSHWARE

diane

Reinforced Boar Curved Military Brush  
• Contours to head & natural hand shape  
• Forms & maintains wave styles  
• Natural wood handle  
• 9 row



Extra Firm Boar No Handle  
**14898**

Extra Firm Boar with Handle  
**14899**

100% Soft Boar Curved Military Brush  
• Contours to head & natural hand  
shape  
• Forms & maintains wave styles  
• Black wood handle  
• 9 row



Soft Boar with Handle  
**14901**

Oak Wood Styling Brush  
Sturdy oak handle, gentle bristles, ball  
points for massaging, & cushion for  
comfortable brushing.  
**18304**





Brown Leather  
15377



Black Leather  
15378

GODEFROY

Beard & Moustache Color (3 capsules)

Ideal for coloring men's facial hair. Pre-measured color capsules give you the versatility to use the exact amount of color with no waste. The unique color capsule is formulated with microscopic color pigments that deeply penetrate coarse facial hair, delivering long-lasting color for up to 6 weeks.

How to use:

- 1 capsule: for small areas like moustaches, goatees, sideburns or short beards.
- 2 capsules: for short to medium beards or long goatees.
- 3 capsules: for medium to long beards.



Jet Black  
12627



Natural Black  
12628



Dark Brown  
12629



Medium Brown  
12630

Silver Fox Gray Enhancing Crème for Men's Facial Hair

A non-greasy, quick-absorbing leave-in serum that instantly imparts brightness & shine to gray facial hair.

Eliminates yellow & brassy tones while conditioning the hair. Used daily, it improves the color & tone of dull gray or white facial hair.

Simply massage a small amount into the beard each day to keep facial hair looking bright & healthy.

118ml  
16709



Thick Beard & Moustache Growth Serum

a 4 week night-time treatment to encourage growth of facial hair. Fills in sparse & patchy areas. Eliminates beard itch & flaky skin.

15ml  
12631



HAIRFLASH COLOR

Men's Brown  
13146



Men's Polyester, Green Stripes, Studs  
17514



Men's Polyester, Black Stripes, Studs  
17515



Men's Polyester, Black & White Stripes, Studs  
17516



Polyester, Navy with Soft Blue Stripes, Studs  
17532



Barber Aprons - Polyurethane/Polyester  
Beige Pockets  
15333



Tan Pockets  
15334



Barber Cape with Silicone Neck  
Hook & Loop, Prevents hair falling  
through neck opening.  
Black & White  
15029



Barber Denim Apron  
15065





Barber Shop Polyester Cape with Arm Holes, Studs  
15132



Barber Polyester Cape, Pinstripes, Studs, Black & White  
15133



Barber Shop Polyester Cape, Panels, Pinstripes, Black & White  
15136



Cape, Moustache, Polyester, Studs  
Black  
15134



White  
15135



Check Pattern, Gents, Elasticated Hook, Blue  
7974



BARBER PRO CAPES

Made to be more durable, resist water seepage, & last longer. High density polyester for a premium feel. A polyurethane coating prevents cut hair from sticking onto cape. Modern barber capes for any barbershop. Perfect for styling & cutting, with adjustable neck closure. Waterproof & static-free material that is also machine washable.

Basketball  
Studs, 140 x 155cm



Gold  
18120



Silver  
18121



Red  
18122

**BARBER PRO CAPES**

Camo  
Studs, 140 x 155cm



Grey  
18114



Blue  
18115



Green  
18116

Scissor & Razor  
Studs, 140 x 155cm



Gold  
18111



Silver  
18112



Green  
18113

Stripe  
Studs, 140 x 155cm



Black  
18117



Blue  
18118



Red  
18119